

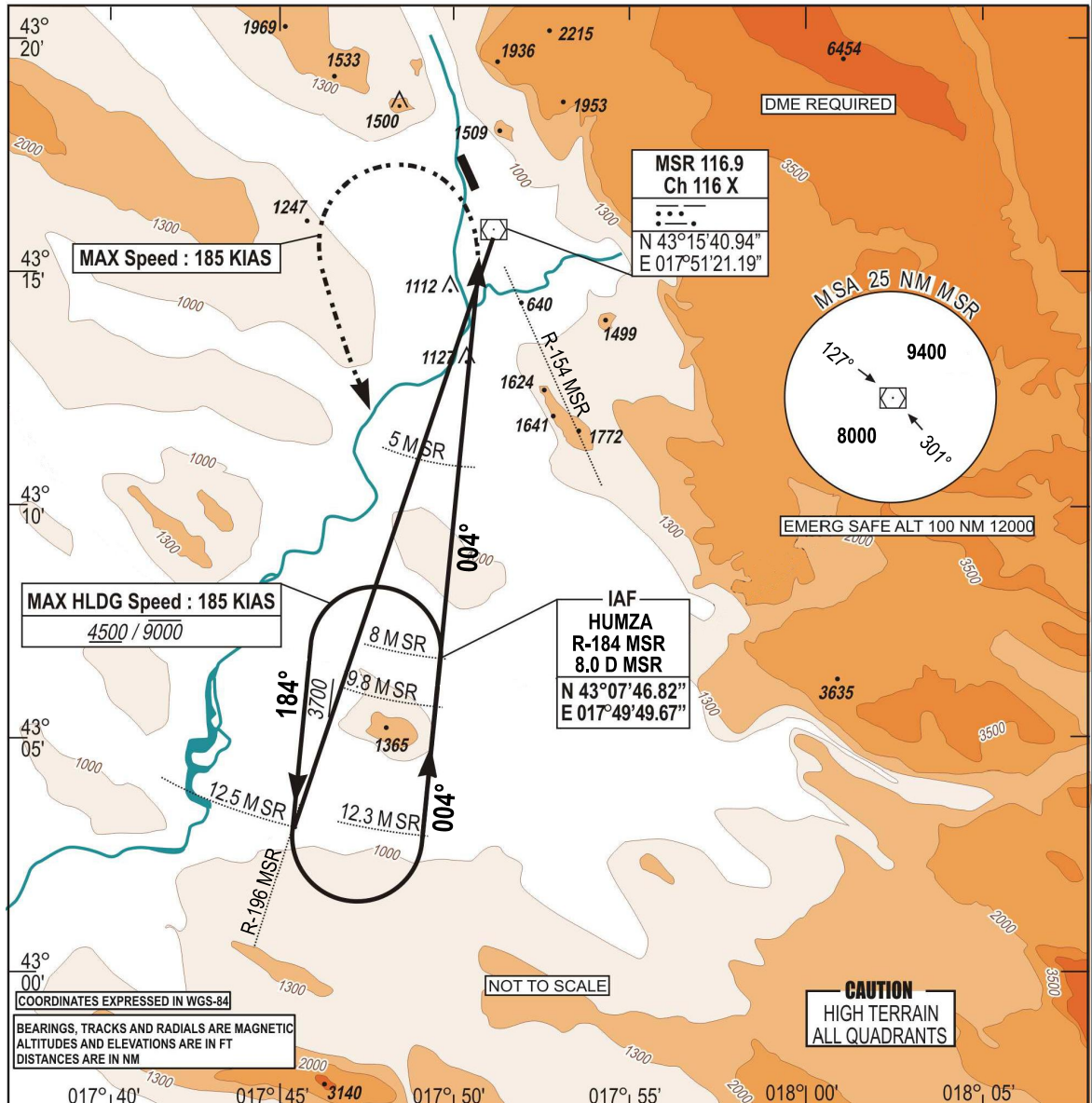
**INSTRUMENT  
APPROACH  
CHART - ICAO**

AERODROM ELEV 174 FT  
HEIGHTS RELATED TO  
THR RWY 33 ELEV 157 FT

TRANSITION  
ALTITUDE  
10 000 FT  
VAR 5°E (2020)

APP 120.225  
129.875  
TWR 125.550  
ATIS 126.225

**MOSTAR (LQMO)  
VORa RWY 33**



CHG: MOXAD IN PROFILE VIEW REPLACED WITH HUMZA

